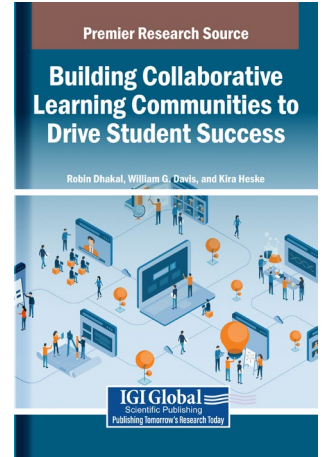


# Building Collaborative Learning Communities to Drive Student Success

Robin Dhakal (The University of Arizona Global Campus, USA)  
 William G. Davis (The University of Arizona Global Campus, USA)  
 Kira Heske (The University of Arizona Global Campus, USA)



## Description:

Building collaborative learning communities has emerged as a powerful strategy to help enhance students' engagement, achievement, and success. By fostering environments where students and educators can work together, these communities create a culture of shared responsibility and respect to support a deeper understanding and long-term academic development. As education continues to evolve, especially in the wake of digital transformation and diverse learning needs, cultivating strong, inclusive learning communities is key to driving meaningful and sustained student outcomes.

**Building Collaborative Learning Communities to Drive Student Success** explores the dynamics between leadership theory and practice and addresses the pressing challenges faced by today's educational institutions. It provides a valuable resource for those seeking to cultivate a culture of collaboration and continuous improvement, enhancing student success in higher education. Covering topics such as artificial intelligence, mentorship, and talent development, this book is an excellent resource for educational leaders, administrators, faculty, researchers, and more.

**ISBN:** 9798337307961 **Pages:** 490 **Copyright:** 2026 **Release Date:** 08-15-2025

**Hardcover:** \$165 **Softcover:** \$125 **E-Book:** \$165 **Hardcover + E-Book:** \$250

## Topics Covered:

Artificial Intelligence (AI)	Mentorship
Assessment	Online Learning Communities
Collaborative Coaching	Self-Efficacy
Collaborative Learning Communities	Soft Skills
Collaborative Synergy	Talent Development
Cross-Departmental Collaboration	
Educational Leadership	
Higher Education	

**Subject:** Education

**Readership Level:** Advanced-Academic Level (Research Recommended)

**Classification:** Edited Reference

**Research Suitable For:** Advanced Undergraduate Students; Graduate Students; Researchers; Academicians; Professionals; Practitioners

### Order Information

Phone: 717-533-8845 x100

Toll Free: 1-866-342-6657

Fax: 717-533-8661 or 717-533-7115

[www.igi-global.com](http://www.igi-global.com)

Address: 701 East Chocolate Avenue, Hershey PA, 17033, USA