

# Library Recommendation

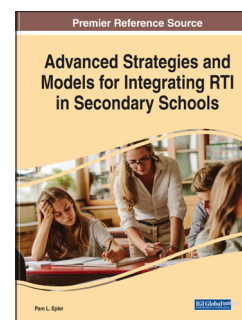
I am pleased to recommend the following IGI Global book publication(s) for inclusion in our library

## Advanced Strategies and Models for Integrating RTI in Secondary Schools

Pam L. Epler (Grand Canyon University, USA)

To better identify and assist struggling students and avoid unnecessary placement into special education services, the service delivery model response to intervention (RTI) is used with the general education population. Even though RTI has been studied in elementary schools for many years, further research on its use at the secondary academic level is scarce.

**Advanced Strategies and Models for Integrating RTI in Secondary Schools** provides emerging research exploring the advanced theoretical and practical aspects of the use of RTI to assist teachers in providing research-based instructional strategies to students who are failing their academic subjects. Featuring coverage on a broad range of topics such as behavioral response, progress monitoring, and career readiness, this book is ideally designed for educators, researchers, and academic professionals seeking current research on the most effective models in place to promote positive student academic achievement.



ISBN: 9781522583226

Release Date: January, 2019

Copyright: 2019

Pages: 300

### Reason(s) for Recommendation:

- ☐ **Personal Use:** This publication is necessary for my research.
- ☐ **Benefit to Library:** This publication is an integral addition to supplement our library collection.
- ☐ **Student Use:** This publication will be useful to my students.
- ☐ **Benefit to Research Community:** This innovative research will be very beneficial to the research community.

**Offering Institutions a 25% discount on the purchase of this title directly through [www.igi-global.com](http://www.igi-global.com)**

Online Coupon Code	Discount	Format	Price
LIB25 Use this Coupon Code at Checkout.	25%	Print or E-Book	\$185.00 / <del>\$139.00</del>

### Related Titles:

- ☐ **K-12 Education: Concepts, Methodologies, Tools, and Applications (3 Vols.)**  
Information Resources Management Association (USA)  
Investigates the latest advances in online and mobile learning, as well as pedagogies and ontologies influenced by current developments in information and communication technologies, enabling teachers, students, and administrators to make the most of their educational experience. This multivolume work presents all stakeholders in K-12 education with the tools necessary to facilitate the next generation of student-teacher interaction.
- ISBN: 9781466645028      Release Date: September, 2013      Copyright: 2014      Pages: 1,837
- Reason(s) for Recommendation:**
- ☐ **Personal Use**    ☐ **Benefit to Library**    ☐ **Student Use**    ☐ **Benefit to Research Community**

- ☐ **Examining Response to Intervention (RTI) Models in Secondary Education**  
Pam Epler (Grand Canyon University, USA)  
Highlights the application of the RTI model to secondary schools through instructional strategies and real-world examples of how this model can be used at the middle and high school levels. Through a series of informative and timely chapters written by global educational specialists, this publication is ideally designed for use by middle and high school teachers and school administrators as well as professors and students in upper-level Educational Leadership and Secondary Education programs.
- ISBN: 9781466685161      Release Date: June, 2015      Copyright: 2015      Pages: 313
- Reason(s) for Recommendation:**
- ☐ **Personal Use**    ☐ **Benefit to Library**    ☐ **Student Use**    ☐ **Benefit to Research Community**

### Recommended By:

Name:	Date:
Position:	Tel:
Department:	Email:

Please forward completed form to your institution's Acquisitions Librarian.  
Questions or direct orders may be forwarded to: [cust@igi-global.com](mailto:cust@igi-global.com)