

Social, Educational, and Cultural Perspectives of Disabilities in the Global South

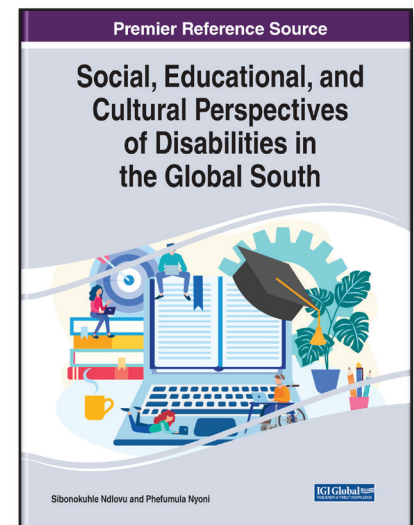
Part of the Advances in Religious and Cultural Studies Book Series

Sibonokuhle Ndlovu (University of Johannesburg, South Africa) and Phefumula Nyoni (University of Johannesburg, South Africa)

Description:

Technology and research for disabilities and disability support are largely produced by the Global North even though it is utilized globally, including in the Global South. For this reason, the encouragement of greater research efforts and technological creation are essential for advanced disability support in the Global South.

Social, Educational, and Cultural Perspectives of Disabilities in the Global South is an essential scholarly publication that examines scholarship and academics with disabilities, with an emphasis on the disruption of stereotypes as well as lived experience. Featuring a wide range of topics such as feminist theory, student motivation, and artificial intelligence, this book is ideal for academicians, academic professionals, researchers, policymakers, and students.



ISBN: 9781799848677

Pages: 300

Copyright: 2021

Release Date: August, 2020

Hardcover: \$185.00

Softcover: \$140.00

E-Book: \$185.00

Hardcover + E-Book: \$220.00

Topics Covered:

Artificial Intelligence
Autism
Disability Scholarship
Economics
Feminist Theory

Religion
Special Education
Student Motivation
Students with Disabilities
Work-Life Balance

Subject: Social Sciences and Humanities

Classification: Edited Reference

Readership Level: Advanced-Academic Level
(Research Recommended)

Research Suitable for: Advanced Undergraduate Students; Graduate Students; Researchers; Academicians; Professionals; Practitioners

Order Information

Phone: 717-533-8845 x100

Toll Free: 1-866-342-6657

Fax: 717-533-8661 or 717-533-7115

Online Bookstore: www.igi-global.com

Mailing Address: 701 East Chocolate Avenue, Hershey, PA 17033, USA