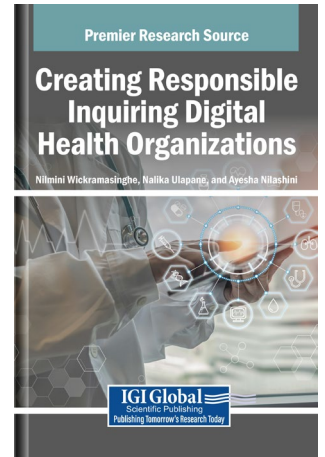


# Creating Responsible Inquiring Digital Health Organizations

Nilmini Wickramasinghe (La Trobe University, Australia)

Nalika Ulapane (La Trobe University, Australia)

Ayesha Nilashini (La Trobe University, Australia)



## Description:

In today's evolving digital landscape, health organizations face responsibilities in delivering care while ensuring ethical, transparent, and informed use of technology. Creating responsible inquiring digital health organizations means building systems that prioritize data integrity, patient privacy, equitable access, and continuous learning through critical inquiry. As AI, telemedicine, and digital records reshape healthcare, it is essential for organizations to foster a culture of accountability, where digital tools are integrated, questioned, evaluated, and improved. This approach empowers health professionals to make informed decisions while instilling public trust in a digital healthcare ecosystem.

**Creating Responsible Inquiring Digital Health Organizations** explores how digital health organizations integrate ethical practices, critical thinking, and continuous learning into technology usage. It examines strategies that promote accountability, patient-centered care, and responsible innovation in a digital health environment. This book covers topics such as biology, digital twins, and generative AI, and is a useful resource for engineers, medical and healthcare professionals, academicians, researchers, and scientists.

**ISBN:** 9798337318776 **Pages:** 292 **Copyright:** 2026 **Release Date:** 09-19-2025

**Hardcover:** \$190 **Softcover:** \$150 **E-Book:** \$190 **Hardcover + E-Book:** \$285

## Topics Covered:

- Agentic AI
- Artificial Intelligence
- Biology
- Business Decision-Making
- Digital Technology
- Digital Twins
- Generative AI
- Healthcare Services
- Knowledge Management
- Medical Technologies
- Personalized Healthcare
- Preventative Care

**Subject:** Medicine and Healthcare

**Readership Level:** Advanced-Academic Level (Research Recommended)

**Classification:** Edited Reference

**Research Suitable For:** Advanced Undergraduate Students; Graduate Students; Researchers; Academicians; Professionals; Practitioners

### Order Information

Phone: 717-533-8845 x100

Toll Free: 1-866-342-6657

Fax: 717-533-8661 or 717-533-7115

[www.igi-global.com](http://www.igi-global.com)

Address: 701 East Chocolate Avenue, Hershey PA, 17033, USA