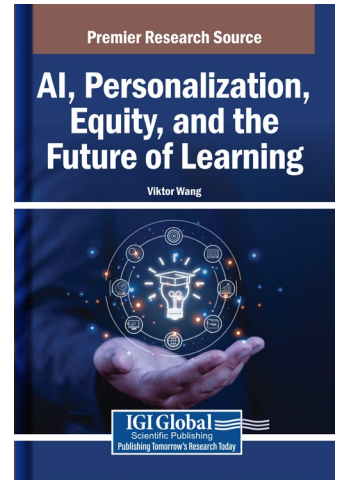


# AI, Personalization, Equity, and the Future of Learning

Viktor Wang (California State University, San Bernardino, USA)



## Description:

The integration of AI into education has redefined how learning is delivered and measured. There is great potential for AI to drive a more personalized learning experience while also tailoring instructions to a person's individual needs. While there are promises to enhance engagement and achievement, it also raises critical questions about equity and access. As we envision the future of learning, it is essential to explore how AI can be harnessed not only to support personalization but also to bridge educational gaps, ensuring that innovation benefits all learners regardless of background or circumstance.

**AI, Personalization, Equity, and the Future of Learning** explores the transformation of AI in education and its impacts on personalized and equitable learning. This book provides a critical lens on equity and access, encouraging the development of inclusive AI-driven solutions that benefit diverse learners worldwide. Covering topics such as academic research, speech recognition tools, and workforce readiness, this book is an excellent resource for researchers, educators, administrators, policymakers, instructional designers, academicians, and more.

**ISBN:** 9798337350974 **Pages:** 566 **Copyright:** 2026 **Release Date:** 06-20-2025

**Hardcover:** \$175.00 **Softcover:** \$135.00 **E-Book:** \$175.00 **Hardcover + E-Book:** \$265.00

## Topics Covered:

Academic Research	Personalized Learning
Accessibility	Speech Recognition Tools
Adult Education	STEM Education
AI Tutors	Student Engagement
Artificial intelligence (AI)	Students with Disabilities
Chatbots	Workforce Development
Emotional Intelligence	Workforce Readiness
Equity in Education	
Holistic Learning Environments	
Lifelong Learning	

**Subject:** Education

**Readership Level:** Advanced-Academic Level (Research Recommended)

**Classification:** Edited Reference

**Research Suitable For:** Advanced Undergraduate Students; Graduate Students; Researchers; Academicians; Professionals; Practitioners

### Order Information

Phone: 717-533-8845 x100

Toll Free: 1-866-342-6657

Fax: 717-533-8661 or 717-533-7115

[www.igi-global.com](http://www.igi-global.com)

Address: 701 East Chocolate Avenue, Hershey PA, 17033, USA